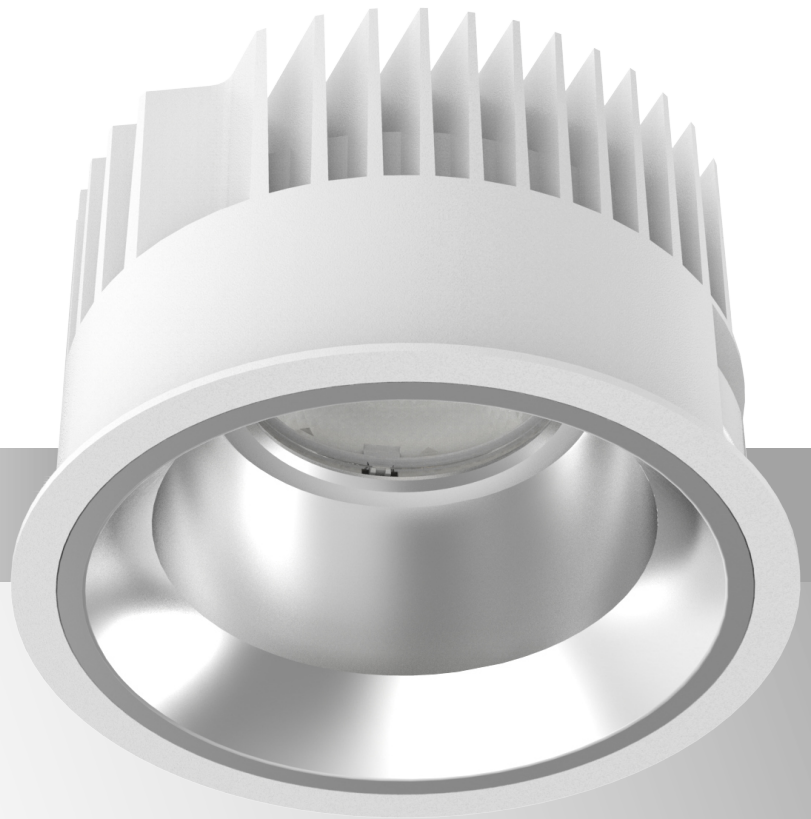


**archlum**  
The right light for every space

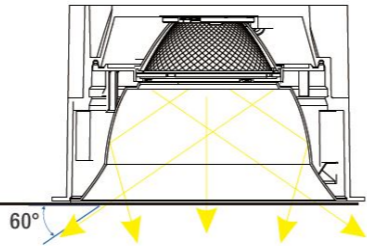
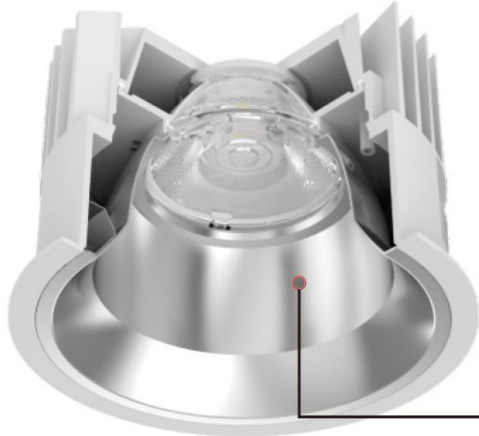


**Sole**

**Super Comfort Lights**

Deep recessed reflector

Large surface, hybrid optical lens positioned deeply inside of glare controlling reflector is what gives main character to Sole family. This combination is resulting with the utmost lighting quality and attractive appearance at the same time. By having UGR less than 19, Sole products bring maximum visual comfort and good surface uniformity, allowing large distance between luminaires. As a result, complete project costs are reduced.



Optics

Sole family with its vast range of spot, narrow, medium and flood beam angles guarantee the maximum efficiency and functionality. Suitable for any room size and ceiling height.



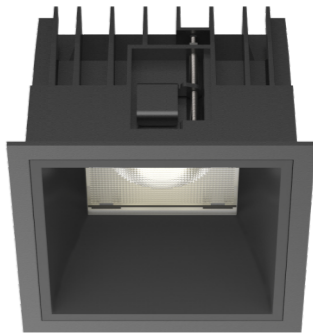
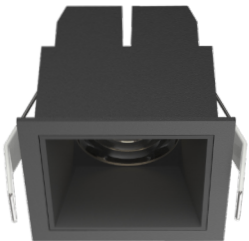


**Sole**

Sole round products are consisting of four different circular ceiling recessed downlights with cutout options of 75mm, 100mm, 150mm and 200mm. Deep recessed reflector with different color alternatives achieve super eye comfort together with an attractive appearance, which makes them applicable to all typical downlight contexts.

**Sole S**

Sole S luminaires are consisting of square-shaped ceiling recessed downlights which are not only suitable to all typical downlight applications, but also providing maximum visual comfort with its deep recessed reflector design. Available in four different cutout options (in mm): 66x66, 100x100, 150x150 and 200x200.





**Sole C**

Sole C, the ceiling surface mounted luminaires of the Sole family, offers two alternatives with diameters of approximately 150mm and 200mm. Deeply recessed design tend to hide the light source and enables a glare-free visual experience. It provides easy installation and effective maintenance.



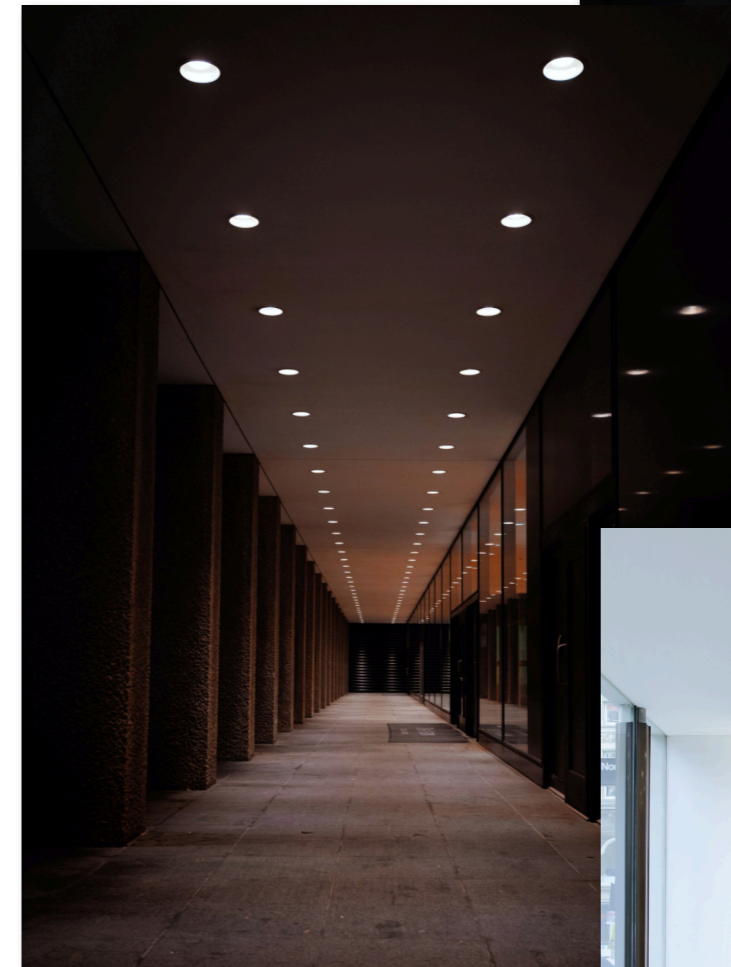
**Sole P**

The pendant luminaires of the Sole family offer a minimalist and elegant design with its cylindrical tube housing. It is applicable for various installation heights and lighting applications. It provides maximum visual performance and comfort.

Length of pendant rod of Sole P can be changed according to customer needs. For Sole P 200 indirect light component is available no request.



Sole family is applicable to all typical downlight contexts with its vast range of application type, size, shape, color and beam angle alternatives.



Sole is a range of professional LED-based luminaires, whose main function is to provide general illumination to public areas. Providing variety of lumen packages and beam angles, it can cover most of indoor applications.

While large optic and strong cut-off are increasing visual comfort and make Sole a good choice for office and education application, wider beam options and high enclosure protection rating (IP54) are qualifying this luminaire family also for more cost optimised and damp locations.

SOLE75



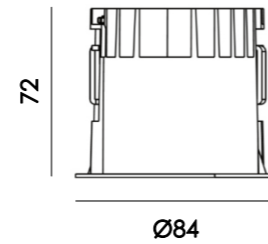
Color rendering index

CRI >90

System power

9 W

13 W



25° Beam



50° Beam



Catalogue ID	CCT	Beam	Light output	Power	Dimension
ARCH-SOLE75-T-xx-25-930-9	3000 K	25°	580 lm	9 W	ø84x72 mm
ARCH-SOLE75-T-xx-25-940-9	4000 K	25°	630 lm	9 W	ø84x72 mm
ARCH-SOLE75-T-xx-50-930-9	3000 K	50°	610 lm	9 W	ø84x72 mm
ARCH-SOLE75-T-xx-50-940-9	4000 K	50°	660 lm	9 W	ø84x72 mm
ARCH-SOLE75-T-xx-25-930-13	3000 K	25°	760 lm	13 W	ø84x72 mm
ARCH-SOLE75-T-xx-25-940-13	4000 K	25°	830 lm	13 W	ø84x72 mm
ARCH-SOLE75-T-xx-50-930-13	3000 K	50°	860 lm	13 W	ø84x72 mm
ARCH-SOLE75-T-xx-50-940-13	4000 K	50°	900 lm	13 W	ø84x72 mm

xx possibilities: **WW** (white-white reflector) W W ; **WS** (white-silver reflector) W S ; **BB** (black-black reflector) B B ; **BS** (black-silver reflector) B S

SOLE100



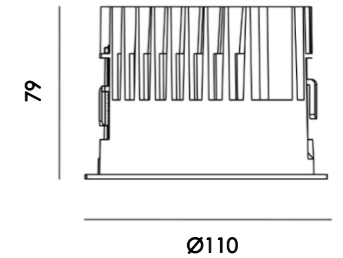
Color rendering index

CRI >90

System power

11 W

15 W



30° Beam



50° Beam



Catalogue ID	CCT	Beam	Light output	Power	Dimension
ARCH-SOLE100-T-xx-30-930-11	3000 K	30°	950 lm	11 W	ø110x79 mm
ARCH-SOLE100-T-xx-30-940-11	4000 K	30°	1040 lm	11 W	ø110x79 mm
ARCH-SOLE100-T-xx-50-930-11	3000 K	50°	840 lm	11 W	ø110x79 mm
ARCH-SOLE100-T-xx-50-940-11	4000 K	50°	930 lm	11 W	ø110x79 mm
ARCH-SOLE100-T-xx-30-930-15	3000 K	30°	1220 lm	15 W	ø110x79 mm
ARCH-SOLE100-T-xx-30-940-15	4000 K	30°	1300 lm	15 W	ø110x79 mm
ARCH-SOLE100-T-xx-50-930-15	3000 K	50°	1090 lm	15 W	ø110x79 mm
ARCH-SOLE100-T-xx-50-940-15	4000 K	50°	1160 lm	15 W	ø110x79 mm

xx possibilities: **WW** (white-white reflector) W W ; **WS** (white-silver reflector) W S ; **BB** (black-black reflector) B B ; **BS** (black-silver reflector) B S

SOLE150



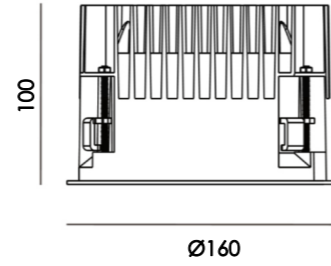
Color rendering index

CRI >90

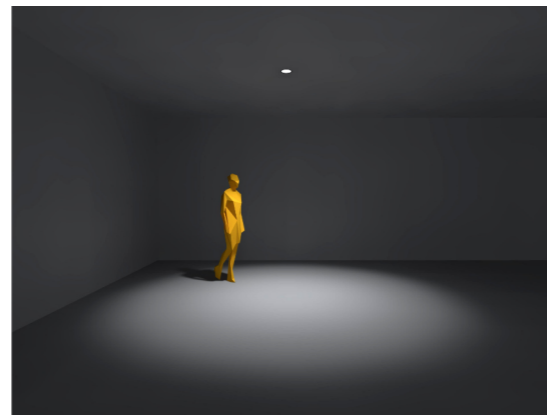
System power

21 W

28 W



30° Beam



60° Beam



Catalogue ID	CCT	Beam	Light output	Power	Dimension
ARCH-SOLE150-T-xx-30-930-21	3000 K	30°	2020 lm	21 W	ø160x100 mm
ARCH-SOLE150-T-xx-30-940-21	4000 K	30°	2130 lm	21 W	ø160x100 mm
ARCH-SOLE150-T-xx-60-930-21	3000 K	60°	1780 lm	21 W	ø160x100 mm
ARCH-SOLE150-T-xx-60-940-21	4000 K	60°	1870 lm	21 W	ø160x100 mm
ARCH-SOLE150-T-xx-30-930-28	3000 K	30°	2700 lm	28 W	ø160x100 mm
ARCH-SOLE150-T-xx-30-940-28	4000 K	30°	2830 lm	28 W	ø160x100 mm
ARCH-SOLE150-T-xx-60-930-28	3000 K	60°	2390 lm	28 W	ø160x100 mm
ARCH-SOLE150-T-xx-60-940-28	4000 K	60°	2500 lm	28 W	ø160x100 mm

xx possibilities: **WW** (white-white reflector) **W** **W** ; **WS** (white-silver reflector) **W** **S** ; **BB** (black-black reflector) **B** **B** ; **BS** (black-silver reflector) **B** **S**

SOLE200



Color rendering index

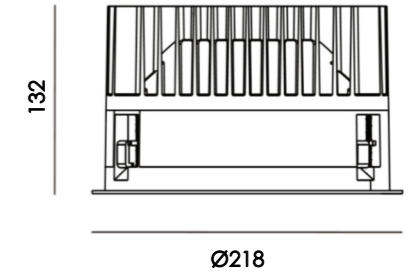
CRI >90

System power

28 W

42 W

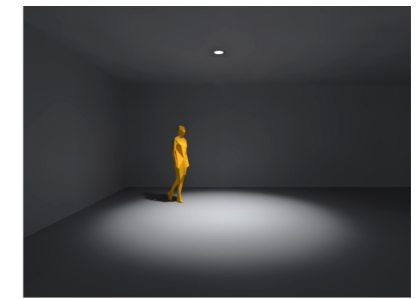
56 W



18° Beam



30° Beam



60° Beam



Catalogue ID	CCT	Beam	Light output	Power	Dimension
ARCH-SOLE200-T-xx-18-930-28	3000 K	18°	2650 lm	28 W	ø218x132 mm
ARCH-SOLE200-T-xx-18-940-28	4000 K	18°	2830 lm	28 W	ø218x132 mm
ARCH-SOLE200-T-xx-30-930-28	3000 K	30°	2790 lm	28 W	ø218x132 mm
ARCH-SOLE200-T-xx-30-940-28	4000 K	30°	3000 lm	28 W	ø218x132 mm
ARCH-SOLE200-T-xx-60-930-28	3000 K	60°	2380 lm	28 W	ø218x132 mm
ARCH-SOLE200-T-xx-60-940-28	4000 K	60°	2540 lm	28 W	ø218x132 mm
ARCH-SOLE200-T-xx-18-930-42	3000 K	18°	3710 lm	42 W	ø218x132 mm
ARCH-SOLE200-T-xx-18-940-42	4000 K	18°	3920 lm	42 W	ø218x132 mm
ARCH-SOLE200-T-xx-30-930-42	3000 K	30°	3870 lm	42 W	ø218x132 mm
ARCH-SOLE200-T-xx-30-940-42	4000 K	30°	4130 lm	42 W	ø218x132 mm
ARCH-SOLE200-T-xx-60-930-42	3000 K	60°	3330 lm	42 W	ø218x132 mm
ARCH-SOLE200-T-xx-60-940-42	4000 K	60°	3520 lm	42 W	ø218x132 mm
ARCH-SOLE200-T-xx-18-930-56	3000 K	18°	4640 lm	56 W	ø218x132 mm
ARCH-SOLE200-T-xx-18-940-56	4000 K	18°	4800 lm	56 W	ø218x132 mm
ARCH-SOLE200-T-xx-30-930-56	3000 K	30°	4830 lm	56 W	ø218x132 mm
ARCH-SOLE200-T-xx-30-940-56	4000 K	30°	5050 lm	56 W	ø218x132 mm
ARCH-SOLE200-T-xx-60-930-56	3000 K	60°	4190 lm	56 W	ø218x132 mm
ARCH-SOLE200-T-xx-60-940-56	4000 K	60°	4320 lm	56 W	ø218x132 mm

xx possibilities: **WW** (white-white reflector) **W** **W** ; **WS** (white-silver reflector) **W** **S** ; **BB** (black-black reflector) **B** **B** ; **BS** (black-silver reflector) **B** **S**

SOLES65



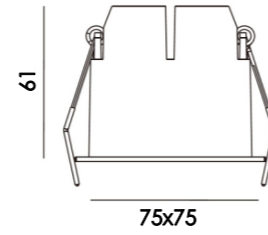
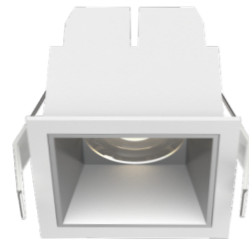
Color rendering index

CRI >90

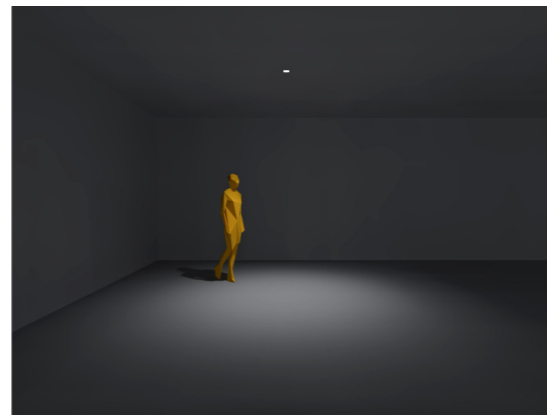
System power

9 W

13 W



25° Beam



60° Beam



Catalogue ID	CCT	Beam	Light output	Power	Dimension
ARCH-SOLES65-T-xx-25-930-9	3000 K	25°	620 lm	9 W	75x61 mm
ARCH-SOLES65-T-xx-25-940-9	4000 K	25°	640 lm	9 W	75x61 mm
ARCH-SOLES65-T-xx-60-930-9	3000 K	60°	670 lm	9 W	75x61 mm
ARCH-SOLES65-T-xx-60-940-9	4000 K	60°	720 lm	9 W	75x61 mm
ARCH-SOLES65-T-xx-25-930-13	3000 K	25°	800 lm	13 W	75x61 mm
ARCH-SOLES65-T-xx-25-940-13	4000 K	25°	880 lm	13 W	75x61 mm
ARCH-SOLES65-T-xx-60-930-13	3000 K	60°	840 lm	13 W	75x61 mm
ARCH-SOLES65-T-xx-60-940-13	4000 K	60°	930 lm	13 W	75x61 mm

xx possibilities: **WW** (white-white reflector) **W** **W** ; **WS** (white-silver reflector) **W** **S** ; **BB** (black-black reflector) **B** **B** ; **BS** (black-silver reflector) **B** **S**

SOLES100



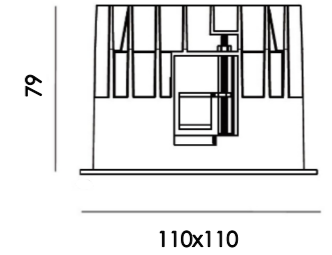
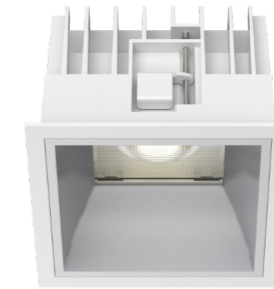
Color rendering index

CRI >90

System power

11 W

15 W



60° Beam



Catalogue ID	CCT	Beam	Light output	Power	Dimension
ARCH-SOLES100-T-xx-60-930-11	3000 K	60°	720 lm	11 W	110x79 mm
ARCH-SOLES100-T-xx-60-940-11	4000 K	60°	800 lm	11 W	110x79 mm
ARCH-SOLES100-T-xx-60-930-15	3000 K	60°	920 lm	15 W	110x79 mm
ARCH-SOLES100-T-xx-60-940-15	4000 K	60°	990 lm	15 W	110x79 mm

xx possibilities: **WW** (white-white reflector) **W** **W** ; **WS** (white-silver reflector) **W** **S** ; **BB** (black-black reflector) **B** **B** ; **BS** (black-silver reflector) **B** **S**

SOLES150



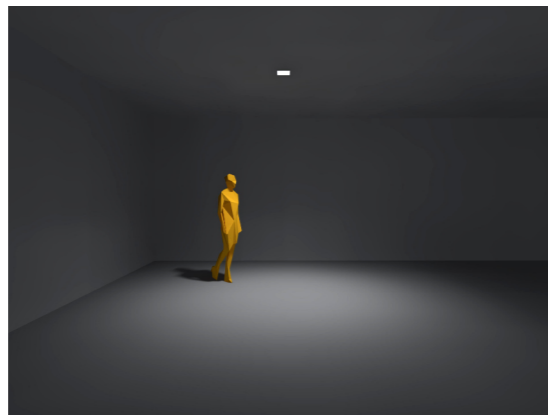
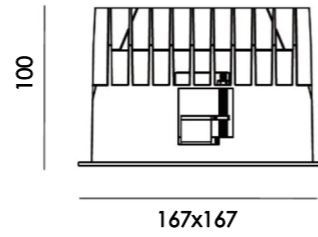
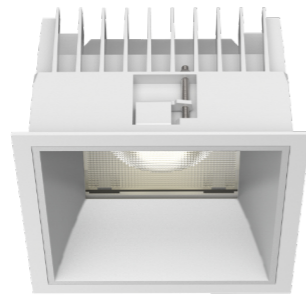
Color rendering index

CRI >90

System power

21 W

28 W



70° Beam

SOLES200



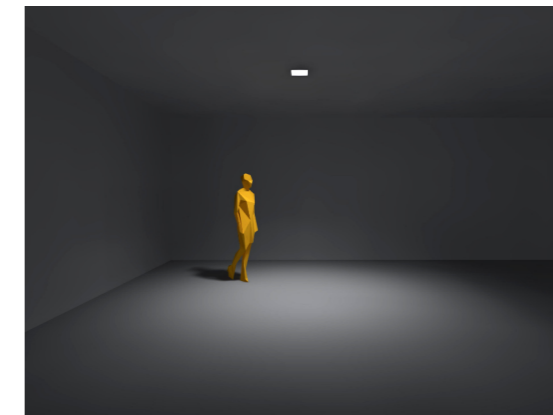
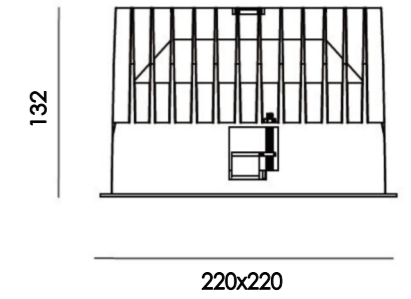
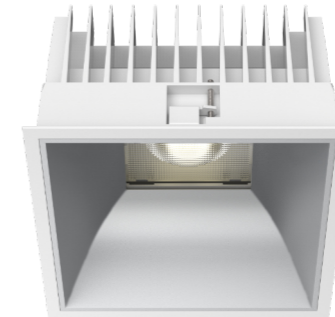
Color rendering index

CRI >90

System power

28 W

42 W



70° Beam



Catalogue ID	CCT	Beam	Light output	Power	Dimension
ARCH-SOLES150-T-xx-70-930-21	3000 K	70°	1560 lm	21 W	167x100 mm
ARCH-SOLES150-T-xx-70-940-21	4000 K	70°	1680 lm	21 W	167x109 mm
ARCH-SOLES150-T-xx-70-930-28	3000 K	70°	2060 lm	28 W	167x100 mm
ARCH-SOLES150-T-xx-70-940-28	4000 K	70°	2150 lm	28 W	167x100 mm



Catalogue ID	CCT	Beam	Light output	Power	Dimension
ARCH-SOLES200-T-xx-70-930-28	3000 K	70°	2050 lm	28 W	220x132 mm
ARCH-SOLES200-T-xx-70-940-28	4000 K	70°	2250 lm	28 W	220x132 mm
ARCH-SOLES200-T-xx-70-930-42	3000 K	70°	3010 lm	42 W	220x132 mm
ARCH-SOLES200-T-xx-70-940-42	4000 K	70°	3130 lm	42 W	220x132 mm

xx possibilities: **WW** (white-white reflector) **W** **W** ; **WS** (white-silver reflector) **W** **S** ; **BB** (black-black reflector) **B** **B** ; **BS** (black-silver reflector) **B** **S**

xx possibilities: **WW** (white-white reflector) **W** **W** ; **WS** (white-silver reflector) **W** **S** ; **BB** (black-black reflector) **B** **B** ; **BS** (black-silver reflector) **B** **S**

SOLEC150



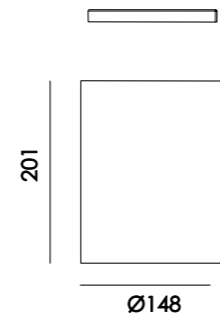
Color rendering index

CRI >90

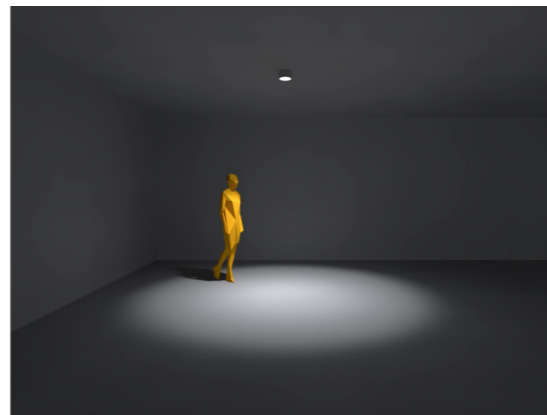
System power

21 W

28 W



30° Beam



60° Beam



Catalogue ID	CCT	Beam	Light output	Power	Dimension
ARCH-SOLESC150-C-xx-30-930-21	3000 K	30°	2110 lm	21 W	ø148x201 mm
ARCH-SOLESC150-C-xx-30-940-21	4000 K	30°	2230 lm	21 W	ø148x201 mm
ARCH-SOLESC150-C-xx-60-930-21	3000 K	60°	1700 lm	21 W	ø148x201 mm
ARCH-SOLESC150-C-xx-60-940-21	4000 K	60°	1770 lm	21 W	ø148x201 mm
ARCH-SOLESC150-C-xx-30-930-28	3000 K	30°	2820 lm	28 W	ø148x201 mm
ARCH-SOLESC150-C-xx-30-940-28	4000 K	30°	2990 lm	28 W	ø148x201 mm
ARCH-SOLESC150-C-xx-60-930-28	3000 K	60°	2190 lm	28 W	ø148x201 mm
ARCH-SOLESC150-C-xx-60-940-28	4000 K	60°	2200 lm	28 W	ø148x201 mm

xx possibilities: **WW** (white-white reflector) **W** **W** ; **WS** (white-silver reflector) **W** **S** ; **BB** (black-black reflector) **B** **B** ; **BS** (black-silver reflector) **B** **S**

SOLEC200



Color rendering index

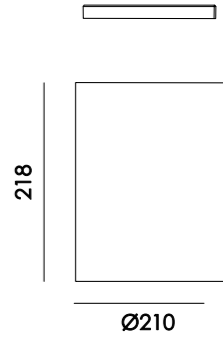
CRI >90

System power

28 W

42 W

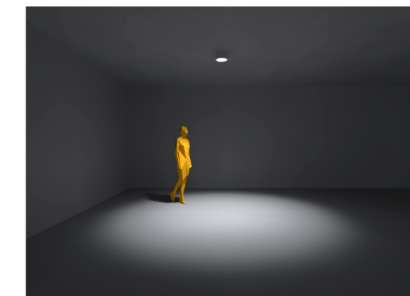
56 W



18° Beam



30° Beam



60° Beam



Catalogue ID	CCT	Beam	Light output	Power	Dimension
ARCH-SOLEC200-C-xx-18-930-28	3000 K	18°	2200 lm	28 W	ø210x218 mm
ARCH-SOLEC200-C-xx-18-940-28	4000 K	18°	2500 lm	28 W	ø210x218 mm
ARCH-SOLEC200-C-xx-30-930-28	3000 K	30°	2200 lm	28 W	ø210x218 mm
ARCH-SOLEC200-C-xx-30-940-28	4000 K	30°	2500 lm	28 W	ø210x218 mm
ARCH-SOLEC200-C-xx-60-930-28	3000 K	60°	1900 lm	28 W	ø210x218 mm
ARCH-SOLEC200-C-xx-60-940-28	4000 K	60°	2100 lm	28 W	ø210x218 mm
ARCH-SOLEC200-C-xx-18-930-42	3000 K	18°	3000 lm	42 W	ø210x218 mm
ARCH-SOLEC200-C-xx-18-940-42	4000 K	18°	3400 lm	42 W	ø210x218 mm
ARCH-SOLEC200-C-xx-30-930-42	3000 K	30°	3000 lm	42 W	ø210x218 mm
ARCH-SOLEC200-C-xx-30-940-42	4000 K	30°	3400 lm	42 W	ø210x218 mm
ARCH-SOLEC200-C-xx-60-930-42	3000 K	60°	2600 lm	42 W	ø210x218 mm
ARCH-SOLEC200-C-xx-60-940-42	4000 K	60°	2900 lm	42 W	ø210x218 mm
ARCH-SOLEC200-C-xx-18-930-56	3000 K	18°	4100 lm	56 W	ø210x218 mm
ARCH-SOLEC200-C-xx-18-940-56	4000 K	18°	3600 lm	56 W	ø210x218 mm
ARCH-SOLEC200-C-xx-30-930-56	3000 K	30°	4100 lm	56 W	ø210x218 mm
ARCH-SOLEC200-C-xx-30-940-56	4000 K	30°	3600 lm	56 W	ø210x218 mm
ARCH-SOLEC200-C-xx-60-930-56	3000 K	60°	3300 lm	56 W	ø210x218 mm
ARCH-SOLEC200-C-xx-60-940-56	4000 K	60°	3700 lm	56 W	ø210x218 mm

xx possibilities: **WW** (white-white reflector) **W** **W** ; **WS** (white-silver reflector) **W** **S** ; **BB** (black-black reflector) **B** **B** ; **BS** (black-silver reflector) **B** **S**

SOLEP150

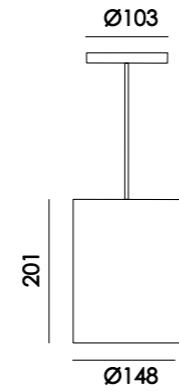
Color rendering index

CRI >90

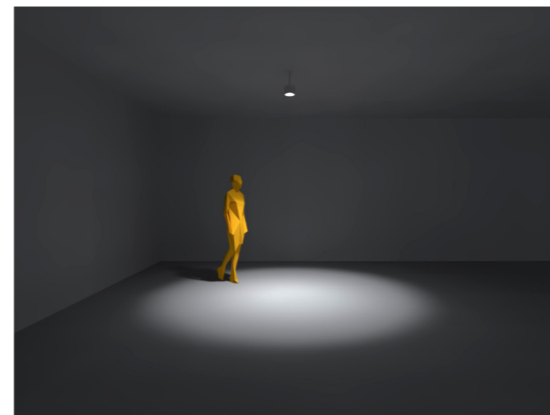
System power

21 W

28 W



30° Beam



60° Beam



Catalogue ID	CCT	Beam	Light output	Power	Dimension
ARCH-SOLESP150-P-xx-30-930-21	3000 K	30°	2110 lm	21 W	ø148x201 mm
ARCH-SOLESP150-P-xx-30-940-21	4000 K	30°	2230 lm	21 W	ø148x201 mm
ARCH-SOLESP150-P-xx-60-930-21	3000 K	60°	1700 lm	21 W	ø148x201 mm
ARCH-SOLESP150-P-xx-60-940-21	4000 K	60°	1770 lm	21 W	ø148x201 mm
ARCH-SOLESP150-P-xx-30-930-28	3000 K	30°	2820 lm	28 W	ø148x201 mm
ARCH-SOLESP150-P-xx-30-940-28	4000 K	30°	2990 lm	28 W	ø148x201 mm
ARCH-SOLESP150-P-xx-60-930-28	3000 K	60°	2190 lm	28 W	ø148x201 mm
ARCH-SOLESP150-P-xx-60-940-28	4000 K	60°	2200 lm	28 W	ø148x201 mm

xx possibilities: **WW** (white-white reflector) W W ; **WS** (white-silver reflector) W S ; **BB** (black-black reflector) B B ; **BS** (black-silver reflector) B S

SOLEP200

Color rendering index

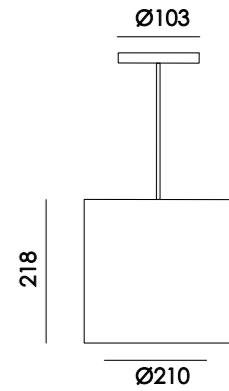
CRI >90

System power

28 W

42 W

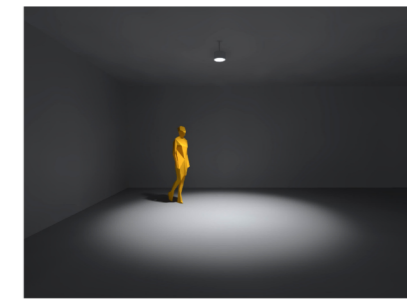
56 W



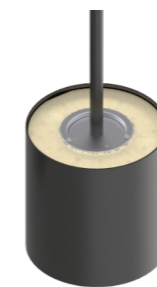
18° Beam



30° Beam



60° Beam



Catalogue ID	CCT	Beam	Light output	Power	Dimension
ARCH-SOLEP200-P-xx-18-930-28	3000 K	18°	2200 lm*	28 W	ø210x218 mm
ARCH-SOLEP200-P-xx-18-940-28	4000 K	18°	2500 lm*	28 W	ø210x218 mm
ARCH-SOLEP200-P-xx-30-930-28	3000 K	30°	2200 lm*	28 W	ø210x218 mm
ARCH-SOLEP200-P-xx-30-940-28	4000 K	30°	2500 lm*	28 W	ø210x218 mm
ARCH-SOLEP200-P-xx-60-930-28	3000 K	60°	1900 lm*	28 W	ø210x218 mm
ARCH-SOLEP200-P-xx-60-940-28	4000 K	60°	2100 lm*	28 W	ø210x218 mm
ARCH-SOLEP200-P-xx-18-930-42	3000 K	18°	3000 lm*	42 W	ø210x218 mm
ARCH-SOLEP200-P-xx-18-940-42	4000 K	18°	3400 lm*	42 W	ø210x218 mm
ARCH-SOLEP200-P-xx-30-930-42	3000 K	30°	3000 lm*	42 W	ø210x218 mm
ARCH-SOLEP200-P-xx-30-940-42	4000 K	30°	3400 lm*	42 W	ø210x218 mm
ARCH-SOLEP200-P-xx-60-930-42	3000 K	60°	2600 lm*	42 W	ø210x218 mm
ARCH-SOLEP200-P-xx-60-940-42	4000 K	60°	2900 lm*	42 W	ø210x218 mm
ARCH-SOLEP200-P-xx-18-930-56	3000 K	18°	4100 lm*	56 W	ø210x218 mm
ARCH-SOLEP200-P-xx-18-940-56	4000 K	18°	3600 lm*	56 W	ø210x218 mm
ARCH-SOLEP200-P-xx-30-930-56	3000 K	30°	4100 lm*	56 W	ø210x218 mm
ARCH-SOLEP200-P-xx-30-940-56	4000 K	30°	3600 lm*	56 W	ø210x218 mm
ARCH-SOLEP200-P-xx-60-930-56	3000 K	60°	3300 lm*	56 W	ø210x218 mm
ARCH-SOLEP200-P-xx-60-940-56	4000 K	60°	3700 lm*	56 W	ø210x218 mm

\*Values refer to only direct lighting. Combination of direct and indirect lighting is also available.

xx possibilities: **WW** (white-white reflector) W W ; **WS** (white-silver reflector) W S ; **BB** (black-black reflector) B B ; **BS** (black-silver reflector) B S

# archlum

The right light for every space

[www.archlum.com](http://www.archlum.com)